

Throat (Oropharyngeal) Sample Collection Instructions

Principle

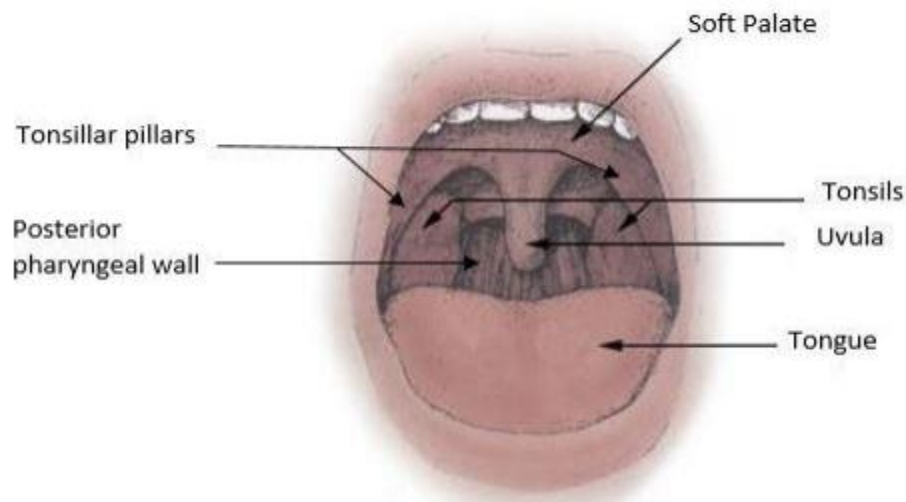
Proper specimen collection and handling is vital to providing accurate results. The sample type is specific to the test being requested. Refer to the test information as to what sample type is required.

Safety Precautions

Universal precautions and infection control practices should be followed while collecting any patient samples.

Procedure

- Insert swab into the posterior pharynx and tonsillar areas.
- Rub swab over both tonsillar pillars and posterior oropharynx and avoid touching the tongue, teeth, and gums.
- Place swab, tip first, into the transport tube provided.
- Immediately label transport tube with two patient identifiers.



References:

Bisno A.L, et al. (2002). Practice Guidelines for the Diagnosis and Management of Group A Streptococcal Pharyngitis. *Clinical Infectious Disease*, 35: 113-25. Smeltzer, S.C., et al. (2008). *Brunner & Suddarth's Textbook of Medical-Surgical Nursing*. Eleventh Edition. Lippincott Williams & Wilkins: Philadelphia